



UtilityScan™ LT

Locate Underground Utilities with GPR



- | | |
|-----------------------------|-------------------------------------|
| 1 Radar control unit | 4 Collapsible frame |
| 2 Survey wheel with encoder | 5 Quick release, foam-filled wheels |
| 3 400 MHz antenna | |

The UtilityScan LT can detect both metallic and non-metallic pipes and cables to depths of up to twelve feet (four meters) based on soil conditions. It is the perfect entry-level system for the utility locating industry.

Easy to Use

- Simple user interface
- Offers real-time target location
- Designed specifically for utility locating

Simple Setup

- Easy to transport and deploy
- Collapsible cart construction
- Quick set-up time

Value

- Perfect blend of cost and performance
- Rugged components for lasting performance

Locate

- Plastic and metallic utilities
- Service connections
- Illegal connections
- Underground storage tanks
- AC pipe
- Duct banks
- Underground vaults

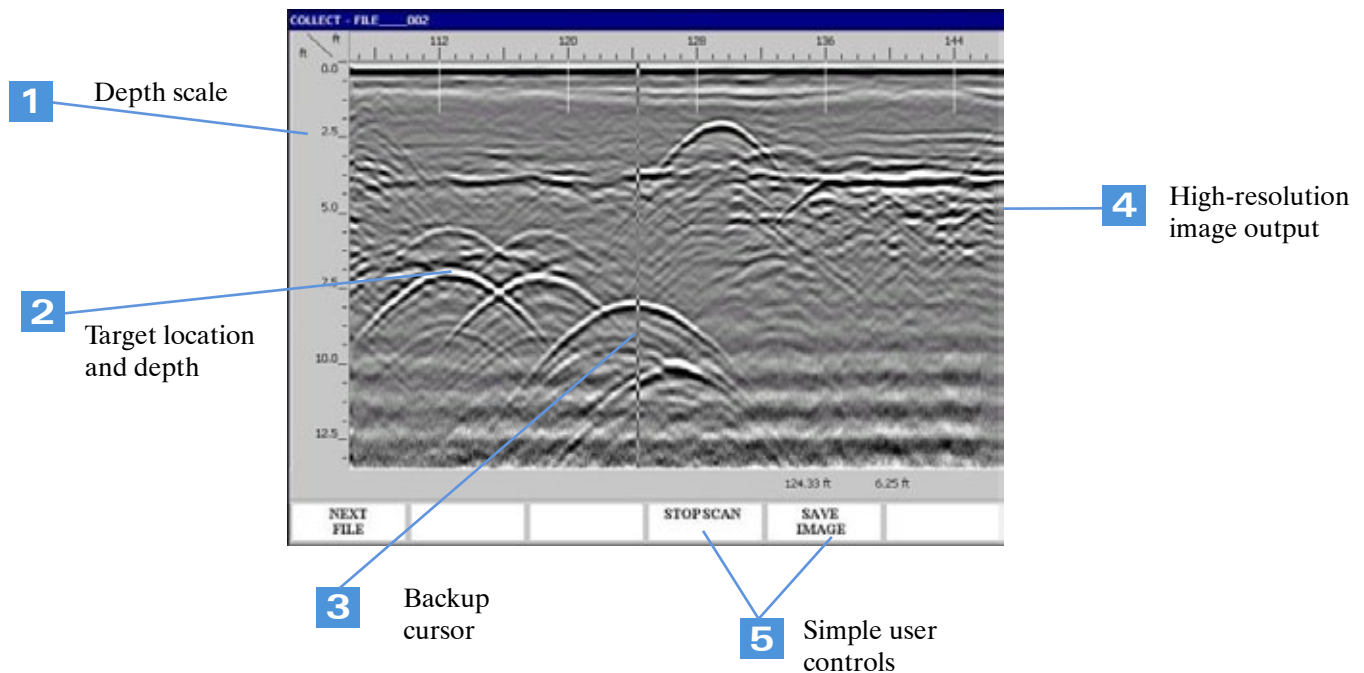


UtilityScan LT Solutions

Ground Penetrating Radar (GPR) is a valuable tool for contractors working in today's complex utility world. Analyzing the underground infrastructure is easier than ever with the UtilityScan LT and its simple two step interface specifically designed for utility locating.

The UtilityScan LT can save and playback data, export images and save user defined set-ups for quick start-ups. The UtilityScan LT weighs just over 50 pounds and is designed for quick disassembly and portability.

Easy User Interface

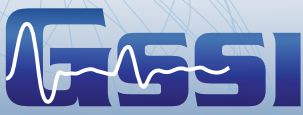


UtilityScan LT Includes

- Radar control unit
- 400 MHz antenna
- Standard survey cart
- Two-meter control cable
- Transit case for control unit
- Two (2) batteries and battery charger
- AC adapter
- UtilityScan LT quick start guide
- Sun shade
- Industry leading two-year warranty

The UtilityScan LT is designed to operate exclusively with the GSSI 400 MHz antenna.

Front mount antenna kit sold separately.



Copyright © 2010 Geophysical Survey Systems, Inc.
July, 2010

Specifications

- Antenna frequency: 400 MHz (0-12 feet/4 meters)
- Data collection speed: 18 scans/feet (50 scans/meter)
- Vertical Sampling: 512 samples/scan
- Internal Memory: 2 GB
- Data format: .dzt
- Image format: .bmp
- English and metric units
- Battery: 10.8 V DC, internal
- Operating temperature: -10°C to 40°C ambient
- Environmental: Water-resistant
- Weight: 52 lbs (23.5 kg)

CE and FCC Compliant

DETECTION SOLUTIONS

Phone Australia 1300 885 383

New Zealand 09 576-8000

email: info@detectionsolutions.com.au